

## Configuring PTP in Hirschmann Switches for use with Kinetix 5700 Drives

John M - 2020-05-27 - Basics

### **Configuring PTP in Hirschmann Switches for use with Kinetix 5700 Drives**

PTP (Precision Time Protocol) is a procedure described in the IEEE 1588-2008 standard that enables the clocks in the network to be synchronized to a degree of precision of just a few 100 ns. Kinetix5700 drives must be time synchronized with the PLC to ensure commanded position and velocity matches actual position and velocity at a given time. PTP (also called CIP sync) communication is used to do achieve this time synchronization.

This guide is for Hirschmann switches using the HiOS platform such as the OS20/30, RPS, RPSE, etc.

Switches using the Classic OS platform are mostly limited to PTP simple mode which allows the switch to set its internal time using PTP traffic from a master close (such as a PLC), however the switch is unable to forward PTP traffic making it impossible to establish a synchronization between the PLC and Kinetix5700. This applies to RS20/30 switches

### PTP Configuration in Hirschmann Switch

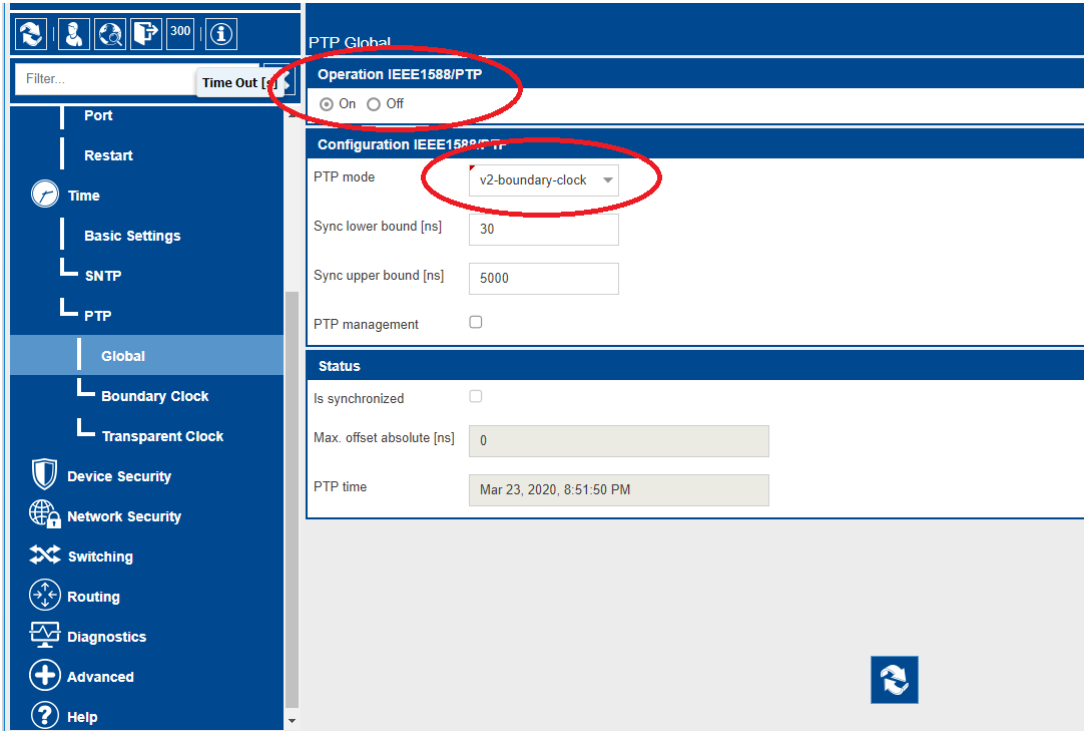
This guide will provide the steps to configure 2 ports to be PTP enabled. As a prerequisite this guide will assume the switch has been configured with an IP address and the user has HiView.

Also note that PTP requires all devices to be communicating in full duplex. This can be achieved by ensuring that all devices and switch ports are set to auto negotiate or by individually setting all devices and switch ports to full duplex manually. If there is a duplex mismatch, for example the switch port is set to auto negotiate and the Kinetix drive is set to

100/Full, the switch will default to half duplex which will prevent PTP synchronization.

Step 1: Connect to the switch on Port 3 and open the web interface using HiView.

Step 2: Browse the main menu to Time -> PTP -> Global. Set Operation IEEE 1588/PTP to On and set PTP mode to v2-boundary-clock. When complete press the write button at the bottom of the page.

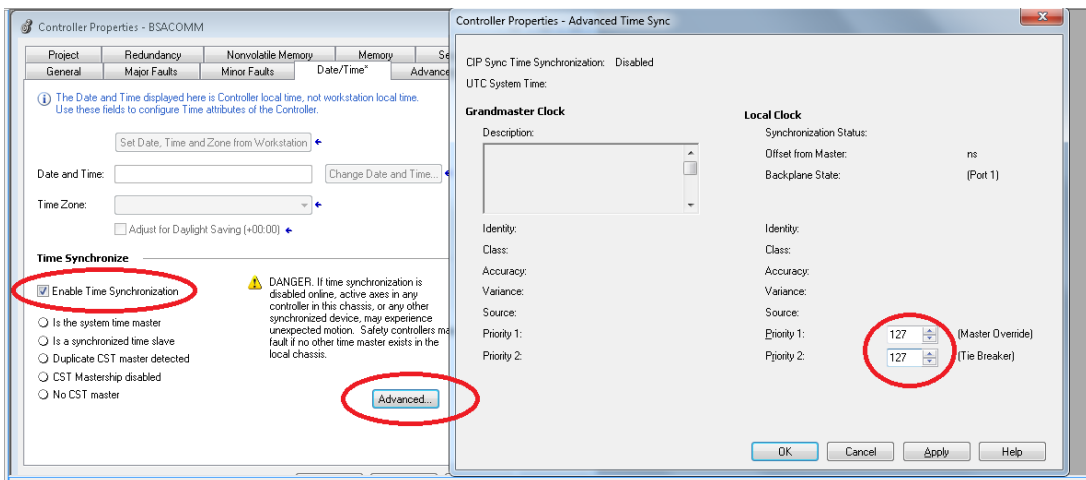


Step 3: Configure PTP port settings. Select the checkbox for PTP enable for each port that requires PTP - this includes the PLC and all Kinetix5700 drives. In the event that the PLC and Kinetix5700 drives are connected to different switches, the ports connecting the switches to each other must also be enabled. The network protocol for all enabled ports needs to be set to UDP/IPv4.

Port	PTP enable	PTP status	Sync interval	Delay mechanism	P2P delay	P2P delay interval [s]	Network protocol	Announce interval [s]	At tir
1/1	<input checked="" type="checkbox"/>	initializing	1	e2e	0	1	IEEE 802.3	2	3
1/2	<input checked="" type="checkbox"/>	initializing	1	e2e	0	1	IEEE 802.3	2	3
1/3	<input checked="" type="checkbox"/>	initializing	1	e2e	0	1	IEEE 802.3	2	3
1/4	<input checked="" type="checkbox"/>	initializing	1	e2e	0	1	UDP/IPv4	2	3
1/5	<input checked="" type="checkbox"/>	initializing	1	e2e	0	1	IEEE 802.3	2	3
1/6	<input checked="" type="checkbox"/>	initializing	1	e2e	0	1	UDP/IPv4	2	3
1/7	<input checked="" type="checkbox"/>	initializing	1	e2e	0	1	IEEE 802.3	2	3
1/8	<input checked="" type="checkbox"/>	initializing	1	e2e	0	1	IEEE 802.3	2	3
1/9	<input checked="" type="checkbox"/>	initializing	1	e2e	0	1	IEEE 802.3	2	3
1/10	<input checked="" type="checkbox"/>	initializing	1	e2e	0	1	IEEE 802.3	2	3
1/11	<input checked="" type="checkbox"/>	initializing	1	e2e	0	1	IEEE 802.3	2	3

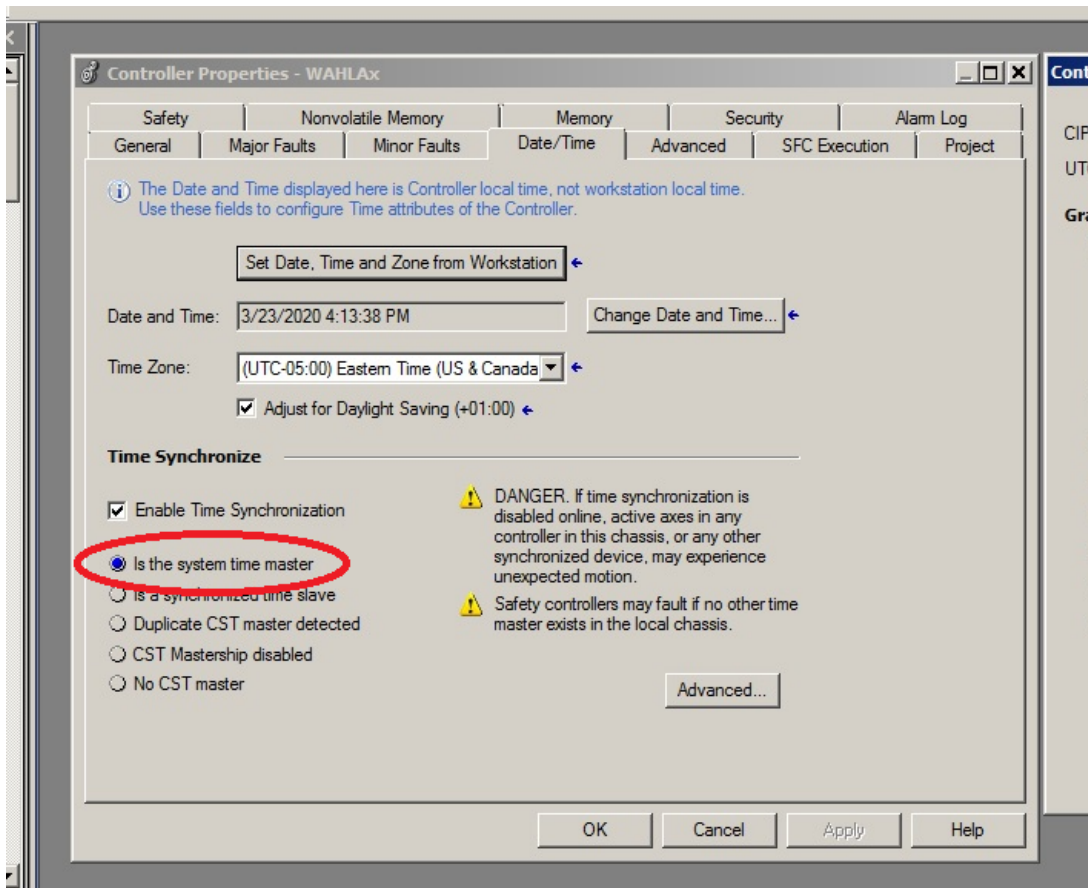
## PLC Configuration

Step 1: Go to Controller Properties -> Date/Time. Select the "Enable Time Synchronization" check box to enable PTP. Then go advanced options and change the Priority 1 and Priority 2 values to 127. Changing the priority value will ensure that the PLC is the time master

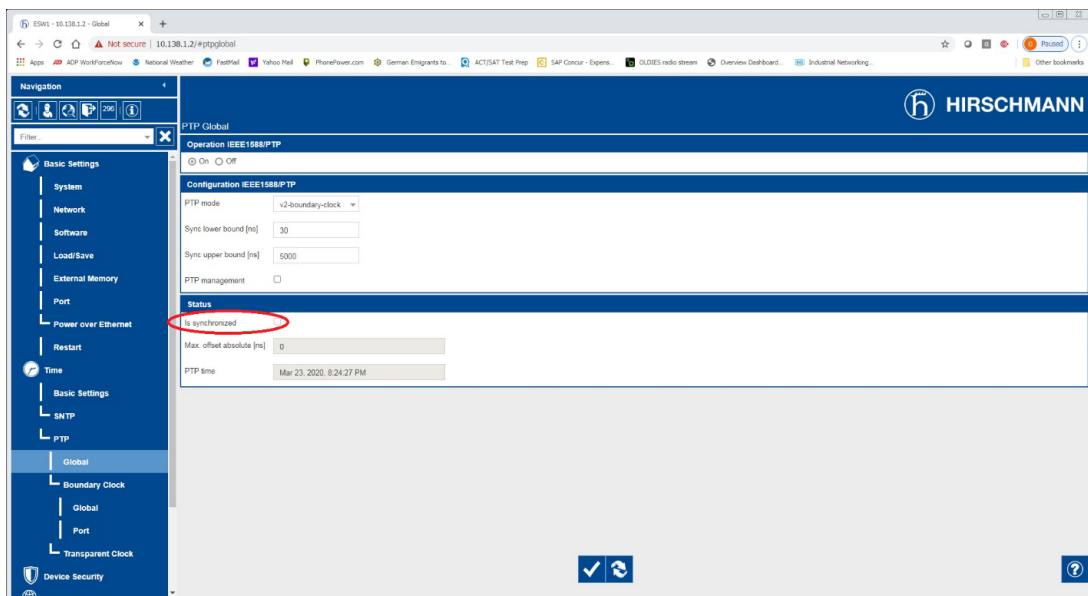


## Time Synchronization Verification

In the PLC controller properties verify that the PLC is the system time master



Connect to the switch and browse to Time->PTP->Global. Verify that the status “Is Synchronized” is active.



Next browse to Time->PTP->Boundary Clock->Global. Here you should be able to see the Priority 1 and 2 values under Grandmaster match the 127 set in the PLC Date/Time settings. The Grandmaster Identity should be the MAC address of the PLC EN2T card with “ff fe”

added between bytes 3 and 4. Also, you should be able to see the Offset to master and Delay to master values - these will update each time the page is refreshed.

PTP Boundary Clock Global

Filter...

Basic Settings

Time

Basic Settings

SNTP

PTP

Global

Boundary Clock

Global

Port

Transparent Clock

Device Security

Network Security

Switching

Routing

Diagnostics

Status IEEE1588/PTPv2 BC

Two step

Steps removed 1

Offset to master [ns] 57

Delay to master [ns] 10

Grandmaster

Priority 1 127

Clock variance 25120

Clock class 248

Priority 2 127

Clock accuracy within10s

Local time properties

Time source ptp

UTC offset valid

Frequency traceable

UTC offset [s] 37

Time traceable

PTP timescale

Identities

Clock identity ec 74 ba ff fe 1b 00 74

Parent port identity ec e5 55 ff fe e0 05 ec 00 05

Grandmaster identity ec e5 55 ff fe e0 05 ec

Finally browse to Time->PTP->Boundary Clock->Port. This screenshot shows an install where the PLC is connected to port 6 and the drive(s) are connected to port 4. The PTP status for the PLC port will be shown as "slave" as the switch is a PTP slave to the PLC. The drive(s) will be shown as "master" as the switch relays the PTP traffic from the PLC, becoming the master to the drive(s).

Navigation

Filter...

Basic Settings

Time

Basic Settings

SNTP

PTP

Global

Boundary Clock

Global

Port

Transparent Clock

Device Security

PTP Boundary Clock Port

Port	PTP enable	PTP status	Sync interval	Delay mechanism	P2P delay	P2P delay interval [s]	Network protocol	Ar int
1/1	<input type="checkbox"/>	initializing	1	e2e	0	1	IEEE 802.3	2
1/2	<input type="checkbox"/>	initializing	1	e2e	0	1	IEEE 802.3	2
1/3	<input type="checkbox"/>	initializing	1	e2e	0	1	IEEE 802.3	2
1/4	<input checked="" type="checkbox"/>	master	1	e2e	0	1	UDP/IPv4	2
1/5	<input type="checkbox"/>	initializing	1	e2e	0	1	IEEE 802.3	2
1/6	<input checked="" type="checkbox"/>	slave	1	e2e	0	1	UDP/IPv4	2
1/7	<input type="checkbox"/>	initializing	1	e2e	0	1	IEEE 802.3	2
1/8	<input type="checkbox"/>	initializing	1	e2e	0	1	IEEE 802.3	2
1/9	<input type="checkbox"/>	initializing	1	e2e	0	1	IEEE 802.3	2
1/10	<input type="checkbox"/>	initializing	1	e2e	0	1	IEEE 802.3	2
1/11	<input type="checkbox"/>	initializing	1	e2e	0	1	IEEE 802.3	2