

Configuration Signature Check

- 2018-02-21 - Industrial HiVision

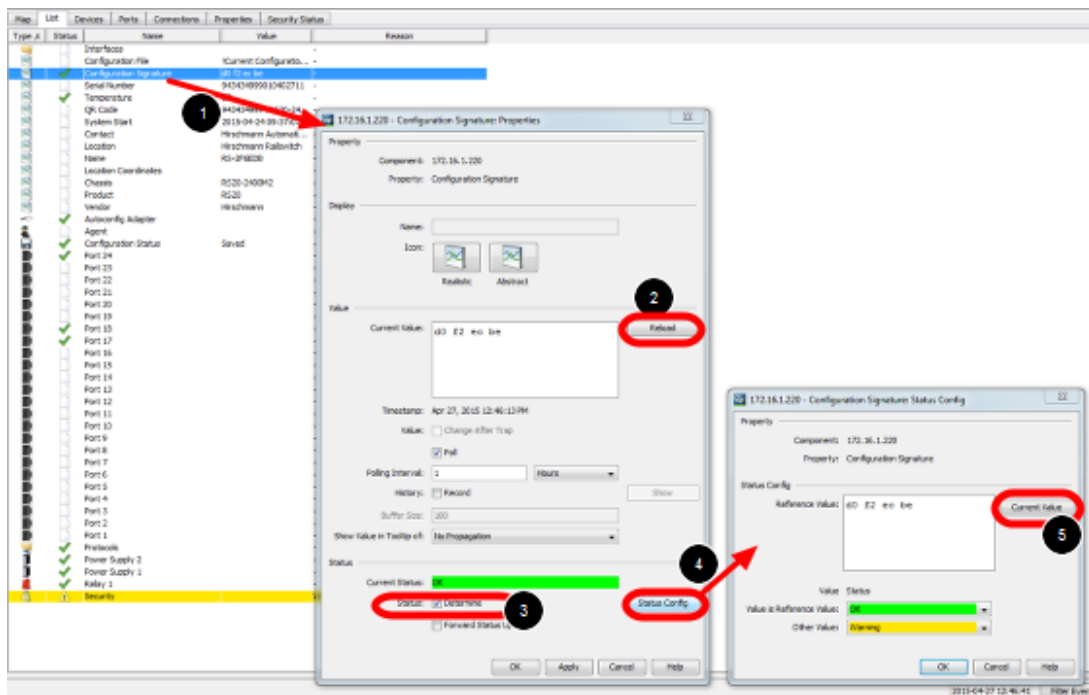
As of v6.0 IHV is able to monitor the configuration signature of a device (Platform4, Platform5, EAGLE)

Therefor the signature is stored in a property.

The standard polling/status configuration can be used for comparing the configuration signature to the reference signature.

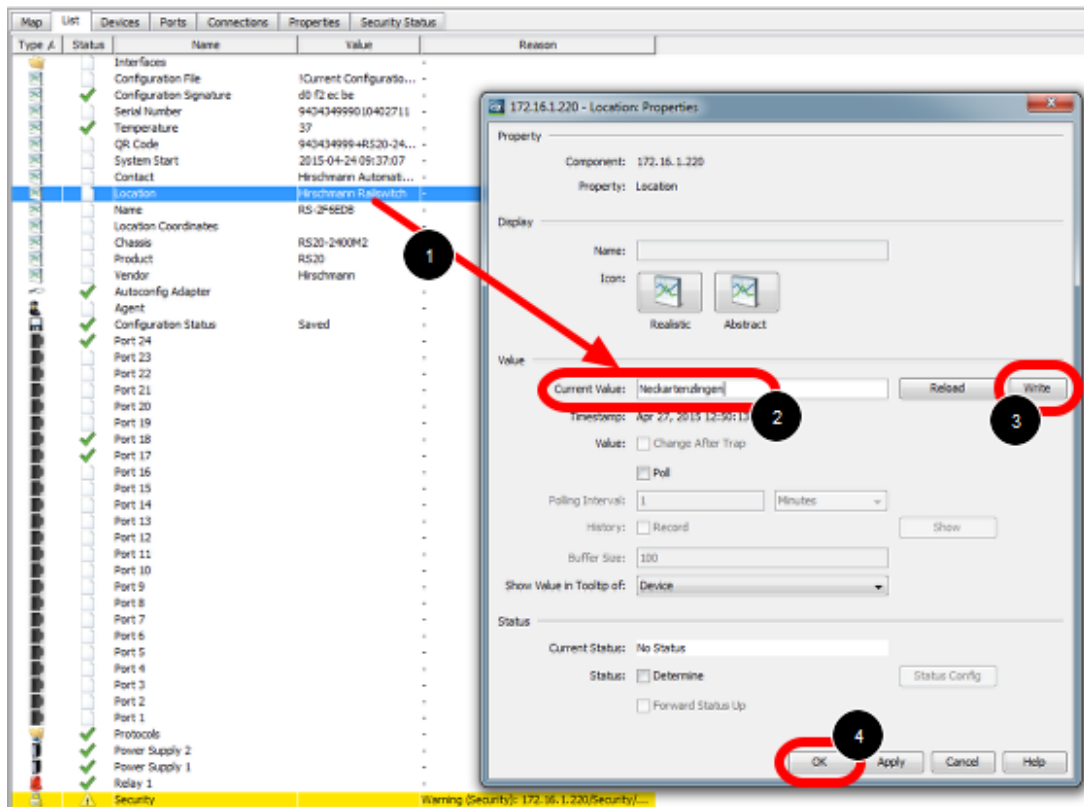
This lesson describes how to set a reference value of the configuration signature and how differences are displayed.

Configuration Signature Properties



1. double click on the property **Configuration Signature**
2. press reload to download the current configuration signature from the device
3. tick check box **Determine Status**
4. open the status configuration
5. set the current value as reference value

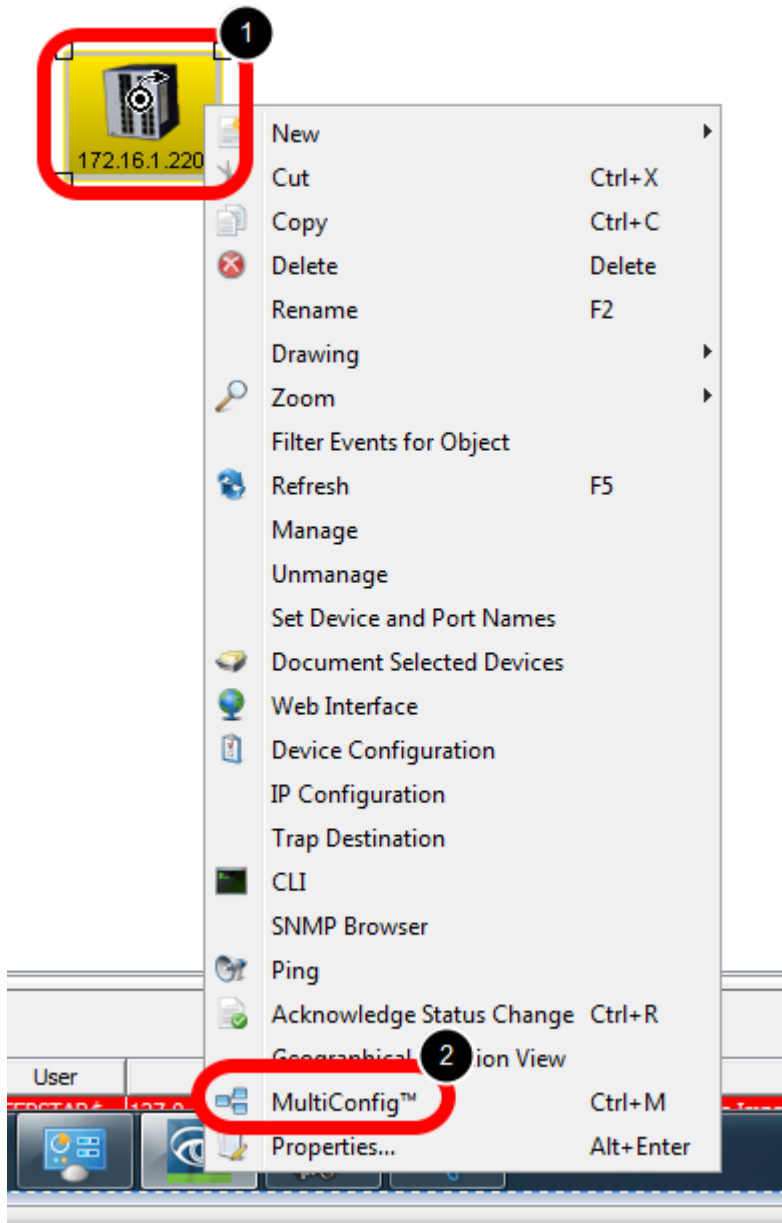
Change the configuration



Change the device configuration e.g. the device location:

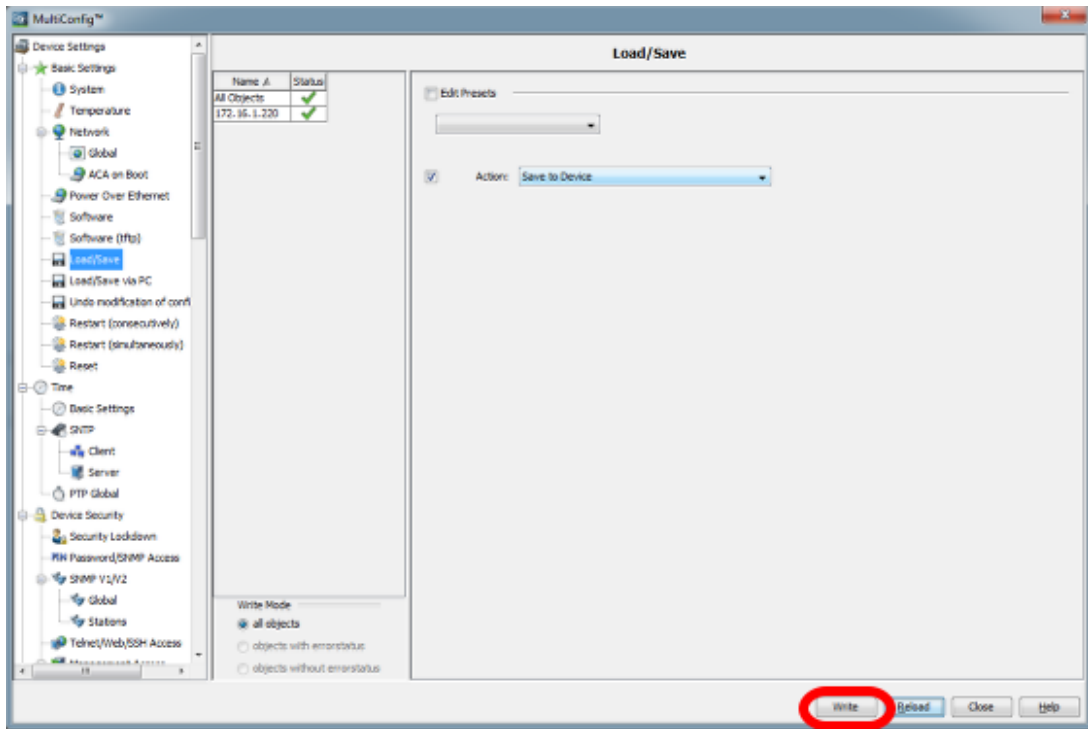
1. double click the property location
2. change the current value
3. press write
4. close the dialog with ok

MultiConfig



1. right click the device on which you just changed the location property
2. select MultiConfig from the context menu

Save the configuration



Save the configuration by pressing Write in the Load/Save dialog

Configuration Signature - Status Impairment

Winbox Industrial HMI/PLC - 172.16.1.229 - 128 Nodes

File Edit View Configuration Tools Help

Back Forward Home New [F5] Undo [Ctrl+Z] Redo [Ctrl+Y] Properties [F4] Scan Network [F5] Backdoor Scan [F6] Preferences

Device: 172.16.1.229 [172.16.1.229] [172.16.1.229] [172.16.1.229] [172.16.1.229]

Selected Paths: All

File Manager: 172.16.1.229

Configuration Signature Properties

Property: Component: 172.16.1.229
Property: Configuration Signature

Value: Current Value: 03 02 00 04

Timestamp: Apr 27, 2015 12:58:26 PM

History: [Refresh] [Clear]

Status: Current Status: Warning (Exceeded)

Configuration Signature Status Config

Property: Component: 172.16.1.229
Property: Configuration Signature

Value: Reference Value: 03 02 00 04

Status: Value in Reference Value: Warning

Unacknowledged Events

ID	ACK	Type	Category	Time	User	Source	Component	Message
100		Warning	Status Exceeded	2015-04-27 12:58:26 PM		172.16.1.229	Configuration Signature	Status Exceeded: Warning Configuration Signature 03 02 00 04
101		Warning	Status Exceeded	2015-04-27 12:58:26 PM		172.16.1.229	Configuration Signature	Status Exceeded: Warning Configuration Signature 03 02 00 04
102		Warning	Status Exceeded	2015-04-27 12:58:26 PM		172.16.1.229	Configuration Signature	Status Exceeded: Warning Configuration Signature 03 02 00 04