

## HiOS: HTML - How to Configure Virtual Router interfaces

John M - 2019-06-27 - HiOS

This article describes the basic steps required to configure VLAN-Based (Virtual ) Router Interfaces on Hirschmann Platform V Layer 3 switches running the HiOS firmware version 07.0.00 or higher and the new HTMLv5 Graphical User Interface (GUI).

### **HiOS-3S or 3A & Firmware 07.0.00**

With the introduction of the HiOS firmware version 07.0.00, the switch agent's Graphical User Interface (GUI) has been changed from a Java based interface to a HTML v5 interface.

### **Configuration Tasks:**

The configuration of the routing function usually contains the following steps:

#### 1. Draw a Network Plan

Create a picture of your network so that you can clearly see the division into subnetworks and the related distribution of the IP addresses.

This step is very important. Good planning of the subnetworks with the corresponding network masks makes the router configuration much easier.

#### 2. Router Basic Settings

Along with enabling the global routing function, the router basic settings also contain the assignment of IP addresses and network masks to the router interfaces, and then enabling the routing function on that specific interface.

### **VLAN-Based (Virtual) Router Interfaces:**

A VLAN-based router interface is one or more physical ports that are combined using VLANs to build a virtual router interface.

If there are no active ports that are a part of the VLAN-based router interface, then the entry from the routing table is removed, because the router transmits exclusively to those ports for which the data transfer is likely to be successful. The entry in the interface configuration table remains.

Between devices attached to the same VLAN of the VLAN-based router interface, the switch

exchanges data packets on Layer 2.

Terminal devices address data packets with a destination address in another subnet to the router. The device then exchanges the data packets on Layer 3.

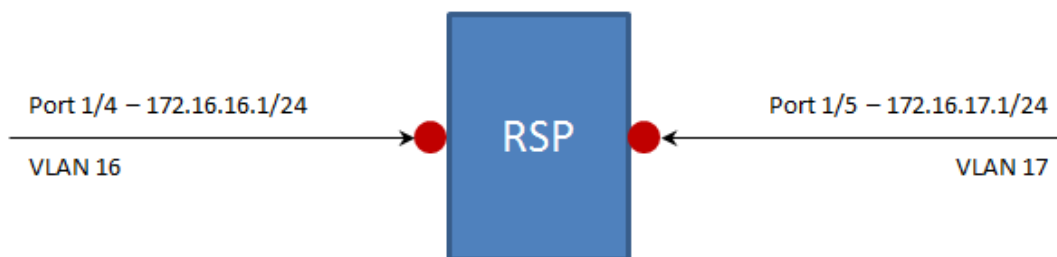
**Note:**

When you assign the VLAN ID of the management VLAN to a router interface, the device deactivates the management IP address. You can then access the device via the IP address of the router interface. The management VLAN is the VLAN by means of which you access the management of all the devices.

**The Network Design:**

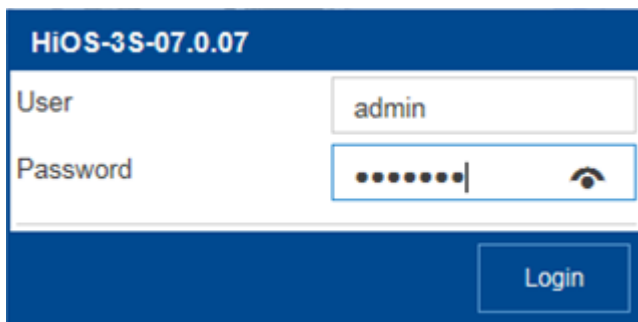
In this article, we will use a RSP switch with Layer 3 Standard features to configure two VLAN-Based (Physical) Router Interfaces.

We will configure interface Port 1/4 and Port 1/5 as VLAN-Based (Virtual) Router interfaces using IP Address in separate subnets.




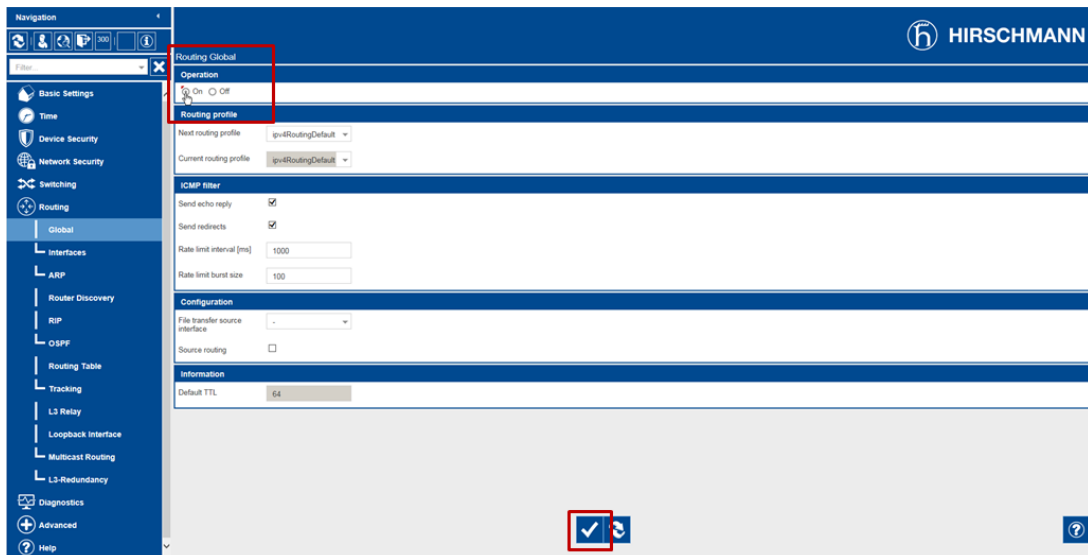
**The Configuration Steps:**

Log into the switch’s GUI with a user ID that has administrative privileges. In the switch’s default configuration, this would be accomplished using the User ID of “ admin “ and a password of “ public “.




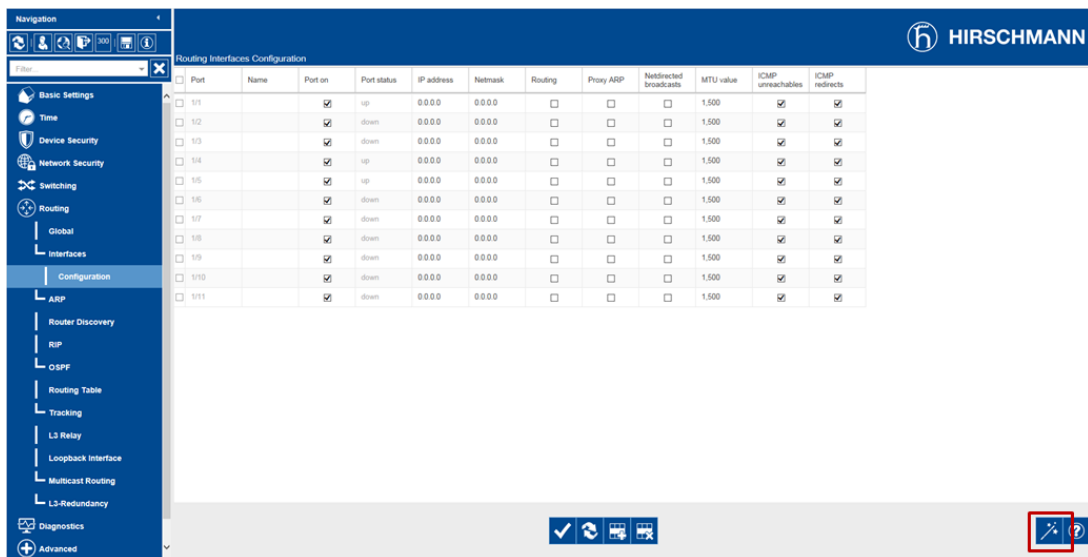
Navigate to the Routing – Global page of the GUI.


Enable the Routing Global operation by selecting the On Operation option radial button and then click the Set button (  ).



Navigate to the Routing - Interfaces - Configuration page of the GUI.

Click the Wizard button ()




Enter 16 in the VLAN ID field and click the Next button ()



Select the Member and Untagged checkboxes for Port 1/4.

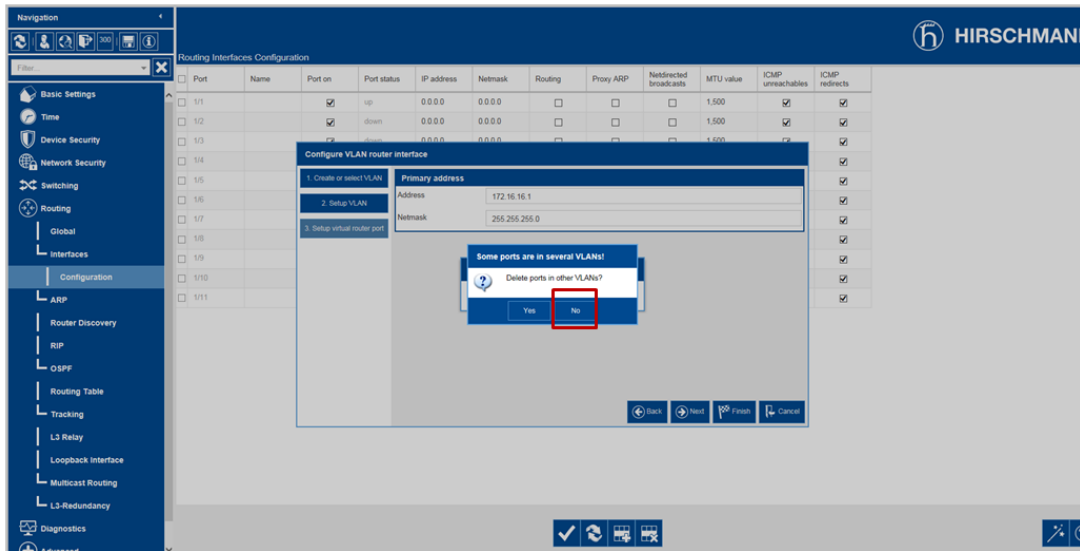
Enter 16 for the Port-VLAN ID field for Port 1/4 and click the Next button (  ).



Enter 172.16.16.1 for the Primary Address and 255.255.255.0 for the Netmask, and then click the Finish button (  ).



Click No when asked to “Delete ports in other VLANs”.

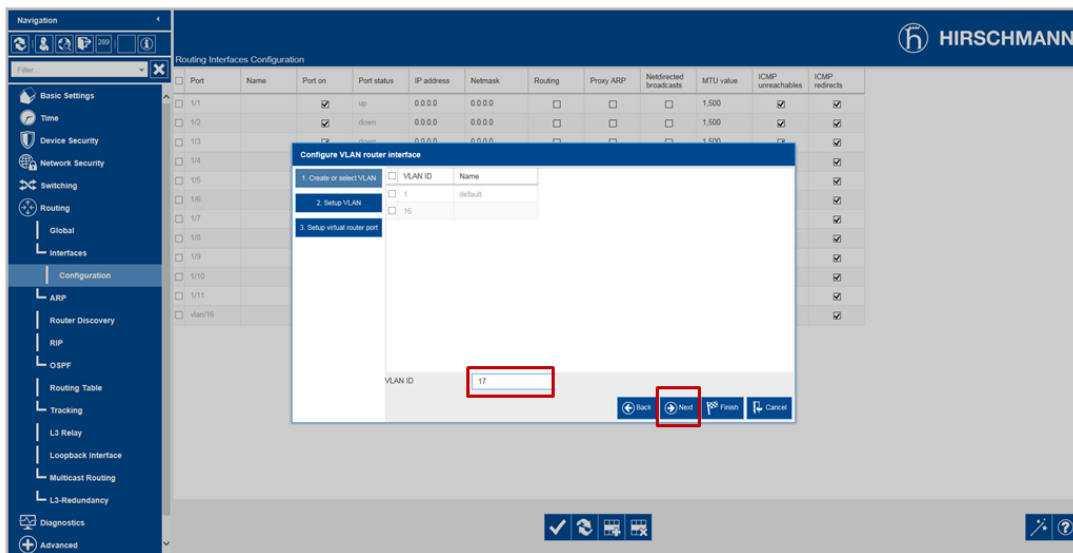


The newly created VLAN-Based Router Interface will appear in the Routing - Interfaces - Configuration page of the GUI as Port vlan/16.



Click the Wizard button (  ) again.

Enter 17 in the VLAN ID field and click the Next button (  ).

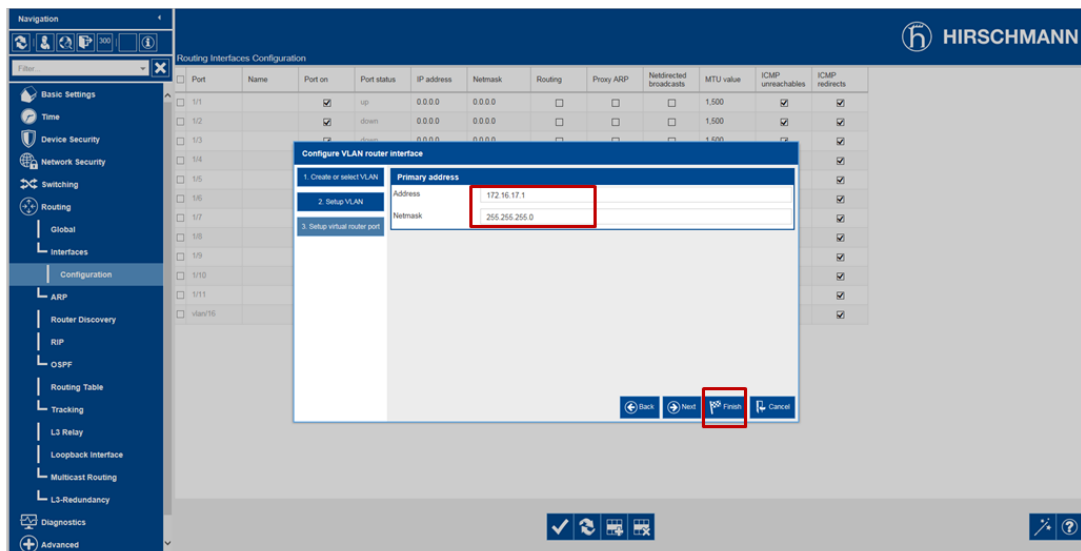


Select the Member and Untagged checkboxes for Port 1/5.

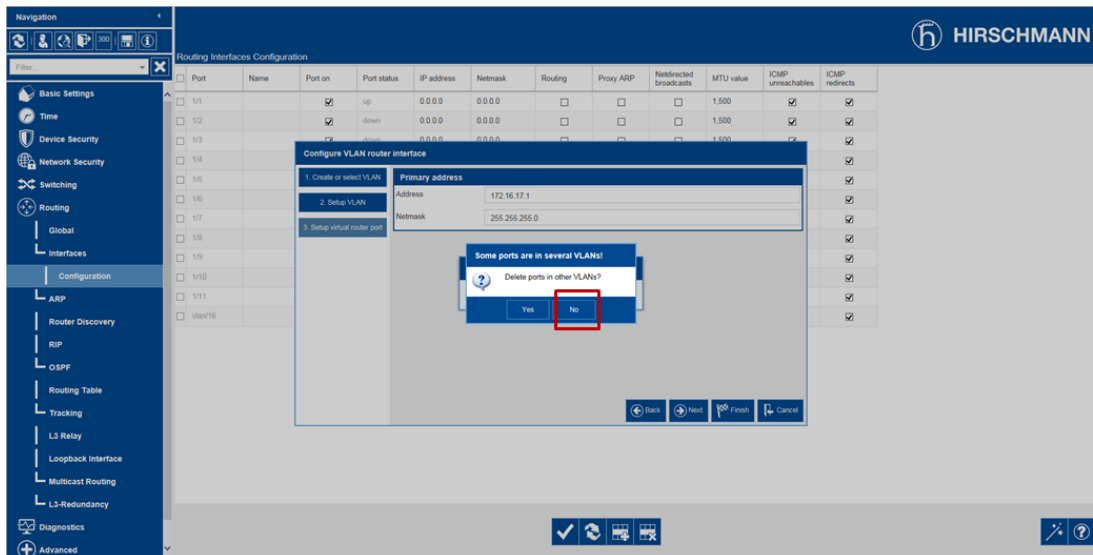
Enter 17 for the Port-VLAN ID field for Port 1/5 and click the Next button (  ).



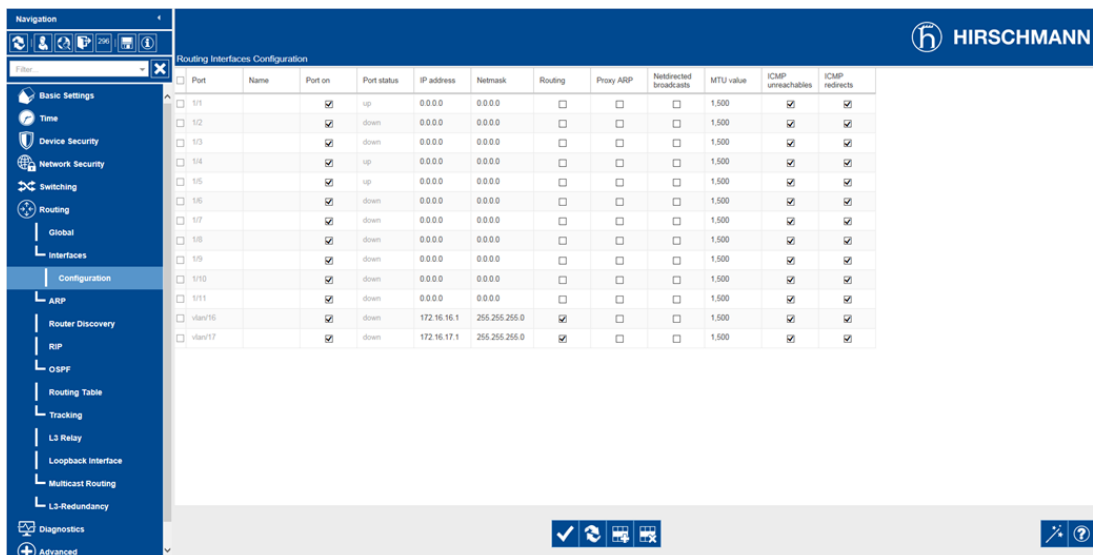
Enter 172.16.17.1 for the Primary Address and 255.255.255.0 for the Netmask, and then click the Finish button (  ).



Click No when asked to “Delete ports in other VLANs”.



The newly created VLAN-Based Router Interface will appear in the Routing - Interfaces - Configuration page of the GUI as Port vlan/17.



This completes the steps required to configure VLAN-Based (Virtual) Router Interfaces for Ports 1/4 and 1/5.

### Verifying the Configuration:

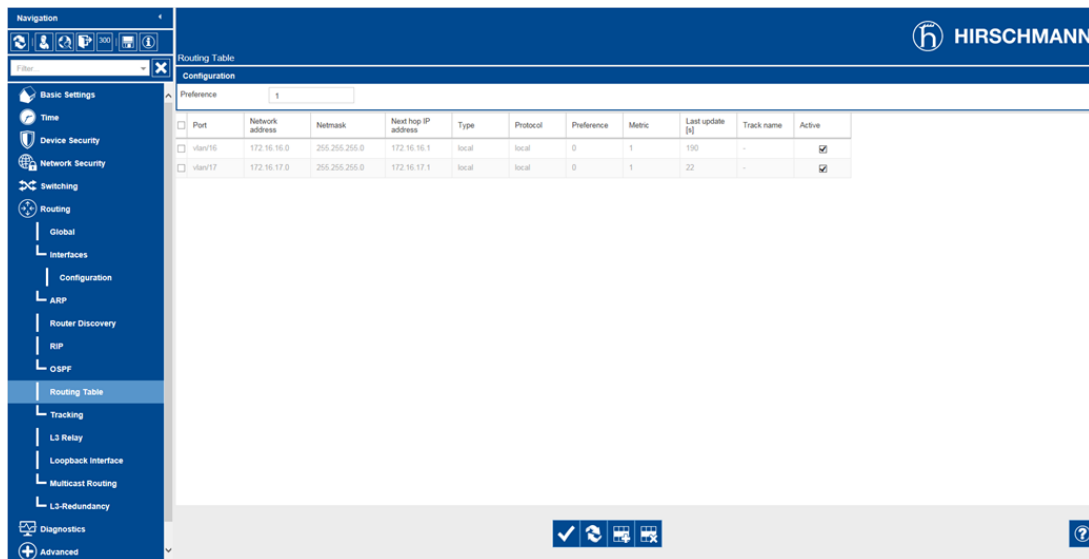
Once we have completed the steps required to configure Ports 1/4 and 1/5 as VLAN-Based (Virtual) Router Interfaces, we should ensure that the ports are now capable of routing IP Packets.

Remember, if at least one of the ports that are configured as a member of the VLAN-Based (Virtual) Router Interface does not have an active Ethernet connection, it can/will not be able to do any routing. So, make sure that you have at least one active Ethernet connection for the ports associated with VLAN/16 and VLAN/17.



Navigate to the Routing - Routing Table page of the GUI.

Click the Reload button ().



The screenshot shows the Hirschmann GUI with the 'Routing Table' configuration page. The left sidebar contains navigation options like Basic Settings, Time, Device Security, Network Security, Switching, Routing, Global, Interfaces, Configuration, ARP, Router Discovery, RIP, OSPF, Routing Table, Tracking, L3 Relay, Loopback Interface, Multicast Routing, L3-Redundancy, Diagnostics, and Advanced. The main content area displays a table of routing entries. The table has columns for Port, Network address, Netmask, Next hop IP address, Type, Protocol, Preference, Metric, Last update [s], Track name, and Active. Two entries are shown, both with 'Active' checked.

Port	Network address	Netmask	Next hop IP address	Type	Protocol	Preference	Metric	Last update [s]	Track name	Active
vlan16	172.16.16.0	255.255.255.0	172.16.16.1	local	local	0	1	190	-	<input checked="" type="checkbox"/>
vlan17	172.16.17.0	255.255.255.0	172.16.17.1	local	local	0	1	22	-	<input checked="" type="checkbox"/>

You should see the two ports listed as having active routes to the IP 172.16.16.0 and 172.16.17.0 networks. Because they are router interfaces configured on this switch, they will be listed as a Local Type.

This switch can now route IP Packets between the two IP networks.

### Additional Information

#### Command Line Interface (CLI) Commands:

The following CLI commands can be used in lieu of the HTMLv5 GUI to configure the switch for Port-Based (Physical) Router Interfaces to meet the same configuration requirements.

Copyright (c) 2011-2019 Hirschmann Automation and Control GmbH

All rights reserved

RSP30 Release HIOS-35-07.0.07

(Build date 2019-05-27 15:32)

System Name : RSP-ECE555973398  
Management IP : 192.168.1.22  
Subnet Mask : 255.255.255.0  
1. Router IP : 0.0.0.0  
Base MAC : EC:45:55:97:33:98  
System Time : 2019-01-02 05:03:03

User:admin  
Password:\*\*\*\*\*

NOTE: Enter '?' for Command Help. Command help displays all options that are valid for the particular mode. For the syntax of a particular command form, please consult the documentation.

```
!(RSP)>enable
!(RSP)#vlan database
!(RSP)(Vlan)#vlan add 16
!(RSP)(Vlan)#name 16 VLAN_16
!(RSP)(Vlan)#vlan add 17
!(RSP)(Vlan)#name 17 VLAN_17
!(RSP)(Vlan)#routing add 16
!(RSP)(Vlan)#routing add 17
!(RSP)(Vlan)#exit
!(RSP)#configure
!(RSP)(Config)#interface vlan/16
!(RSP)((Interface)vlan/16)#ip address primary 172.16.16.1 255.255.255.0
!(RSP)((Interface)vlan/16)#ip routing
!(RSP)((Interface)vlan/16)#exit
!(RSP)(Config)#interface vlan/17
!(RSP)((Interface)vlan/16)#ip address primary 172.16.17.1 255.255.255.0
!(RSP)((Interface)vlan/16)#ip routing
!(RSP)((Interface)vlan/16)#exit
```

```
!(RSP)(Config)#interface 1/4
!(RSP)((Interface)1/4)#vlan participation include 16
!(RSP)((Interface)1/4)#vlan pvid 16
!(RSP)((Interface)1/4)#exit
!(RSP)(Config)#interface 1/5
!(RSP)((Interface)1/5)#vlan participation include 17
!(RSP)((Interface)1/5)#vlan pvid 17
!(RSP)((Interface)1/5)#exit
!(RSP)(Config)#show ip route all
```

Network	Address	Protocol	Next Hop IP	Next Hop IF	Pref	Metric	Active
172.16.16.0/24	Local		172.16.16.1	vlan/16	0	1	[x]
172.16.17.0/24	Local		172.16.17.1	vlan/17	0	1	[x]

```
!(RSP)(Config)#
!(RSP)(Config)#exit
!(RSP)#
!(RSP)>logout
```