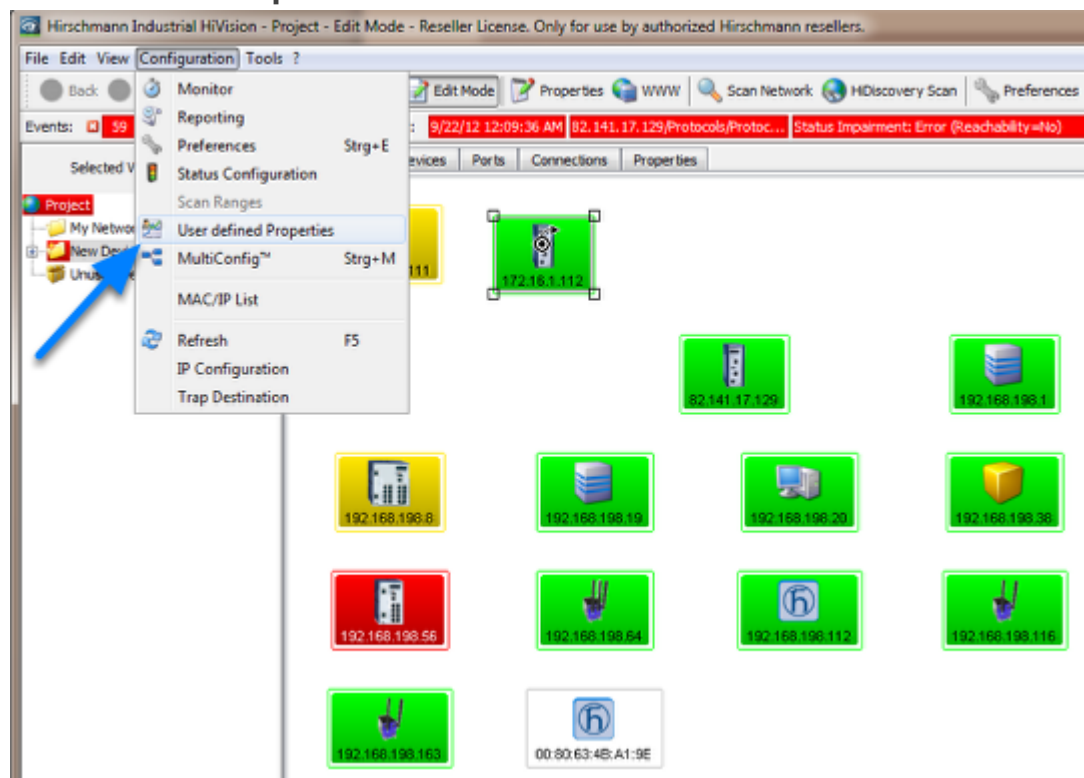


## Howto display user defined properties in the map

- 2024-07-24 - Industrial HiVision

This lesson describes howto display user defined properties in the IHV map.  
As an example a customized map for temperature values should be created.

### User Defined Properties



Select **Configuration -- User defined Properties**

### New Entry



Click **New** to create a new property

## MIB Viewer



Click the "..." button to browse through the MIB tree

or

Copy and paste the OID from the MIB Variable Finder document.

**Note:** Browsing the MIB and select a SNMP variable automatically fills the type field and if defined the mapping (e.g. 1=on, 2=off)

## Temperature Upper Limit Property

User defined Property

Name:

Label:

Icon:    
Realistic Abstract

Parent Property:

MIB Variable/OID:

Instance:

Type:

Mapping

Mapping:

Factor:

Offset:

Create a new property for the upper temperature limit.

OID: **1.3.6.1.4.1.248.14.2.5.2**

Instance: 0

Type: Integer

## Temperature Lower Limit Property

User defined Property

Name:

Label:

Icon:    
Realistic Abstract

Parent Property:

MIB Variable/OID:

Instance:

Type:

Mapping

Mapping:

Factor:

Offset:

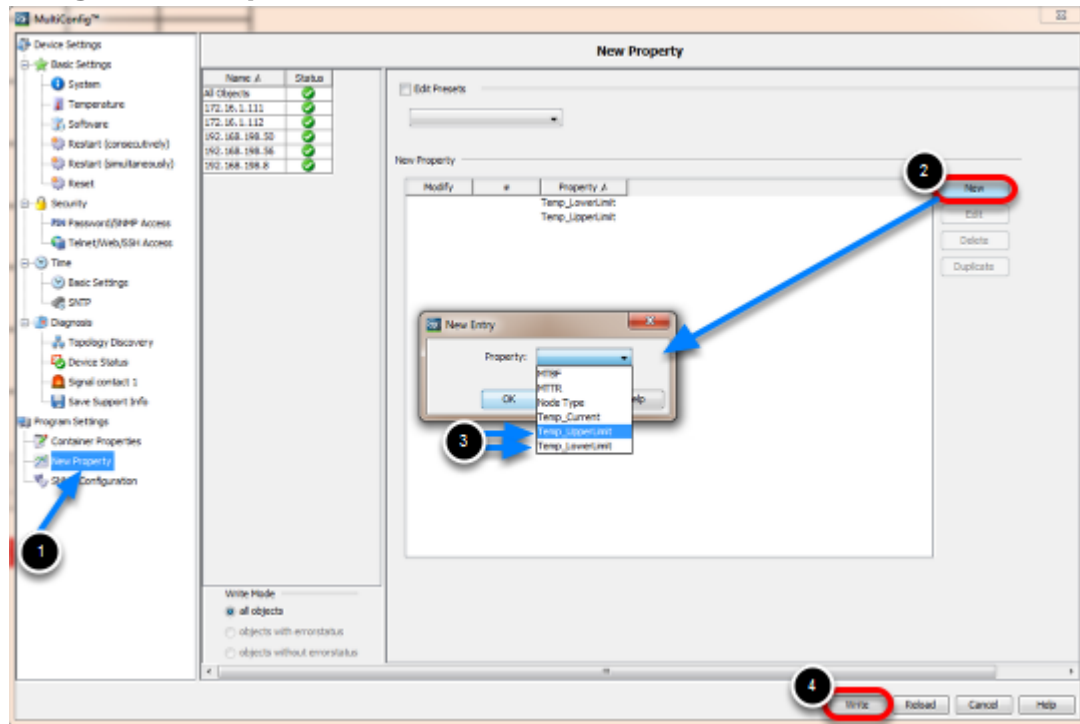
Create a new property for the lower temperature limit.

OID: **1.3.6.1.4.1.248.14.2.5.3**

Instance: 0

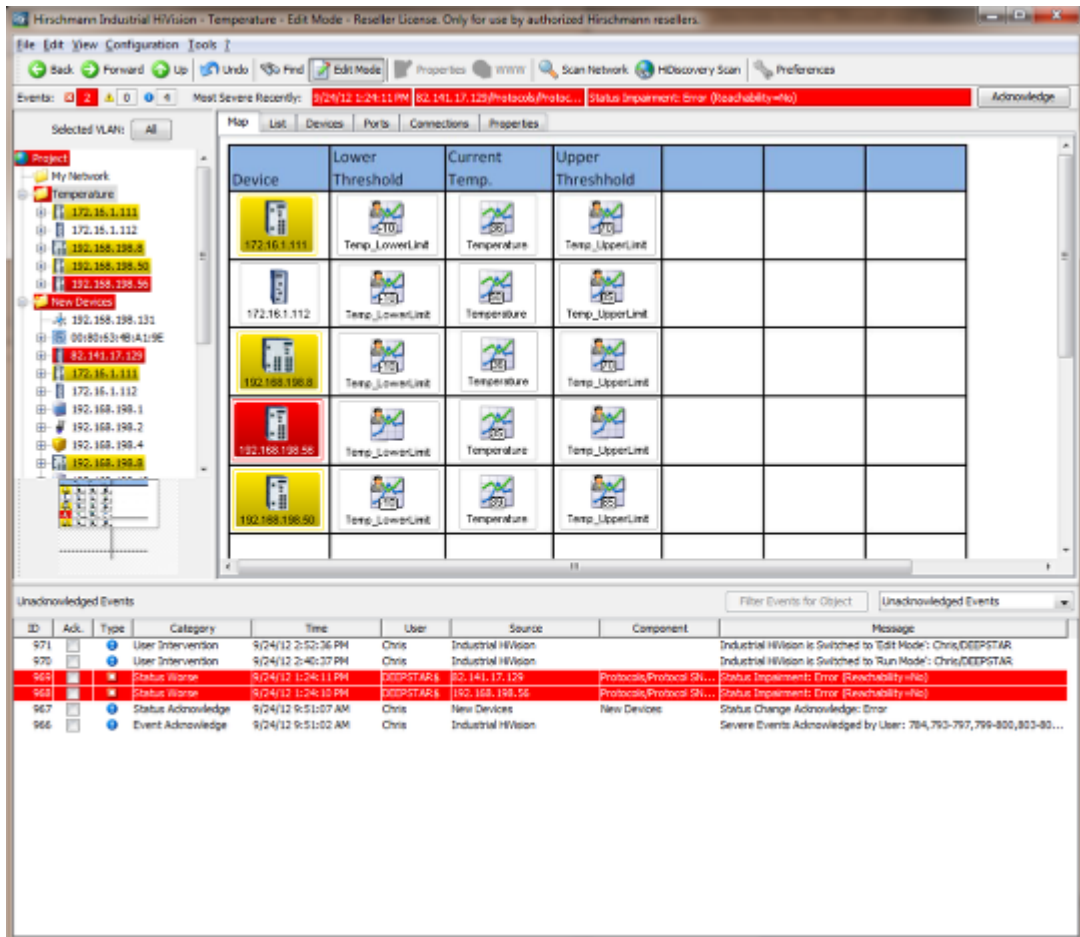
Type: Integer

## Assign new Properties



1. Navigate to **New Property** in the MultiConfig
2. Click **New**
3. Select the previous configured properties and click OK
4. **Write** the changes to the selection of devices

## Overview Map



Create a temperature overview map and arrange the icons accordingly.

The picture shows an example with a background image.

All icons are copies of objects in other maps.

## Open Multiconfig



In the new created overview map select the current temperature icons.  
 Right click to open the context menu and select **MultiConfig**.

## Change Properties



Change the polling interval to 10s

