

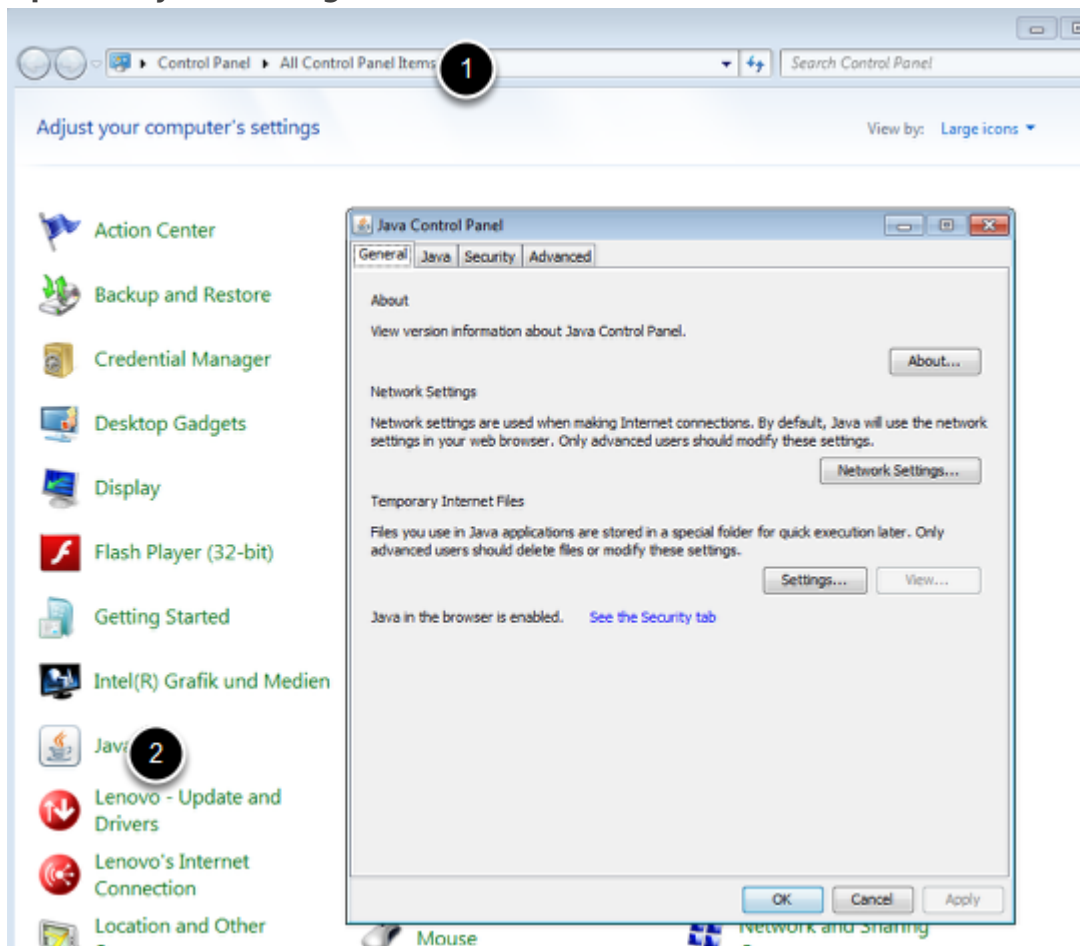
Wissensdatenbank > Produkte > Industrial HiVision > What are the Java recommended settings for remote access on Hivision Server ?

## What are the Java recommended settings for remote access on Hivision Server ?

- 2018-02-21 - Industrial HiVision

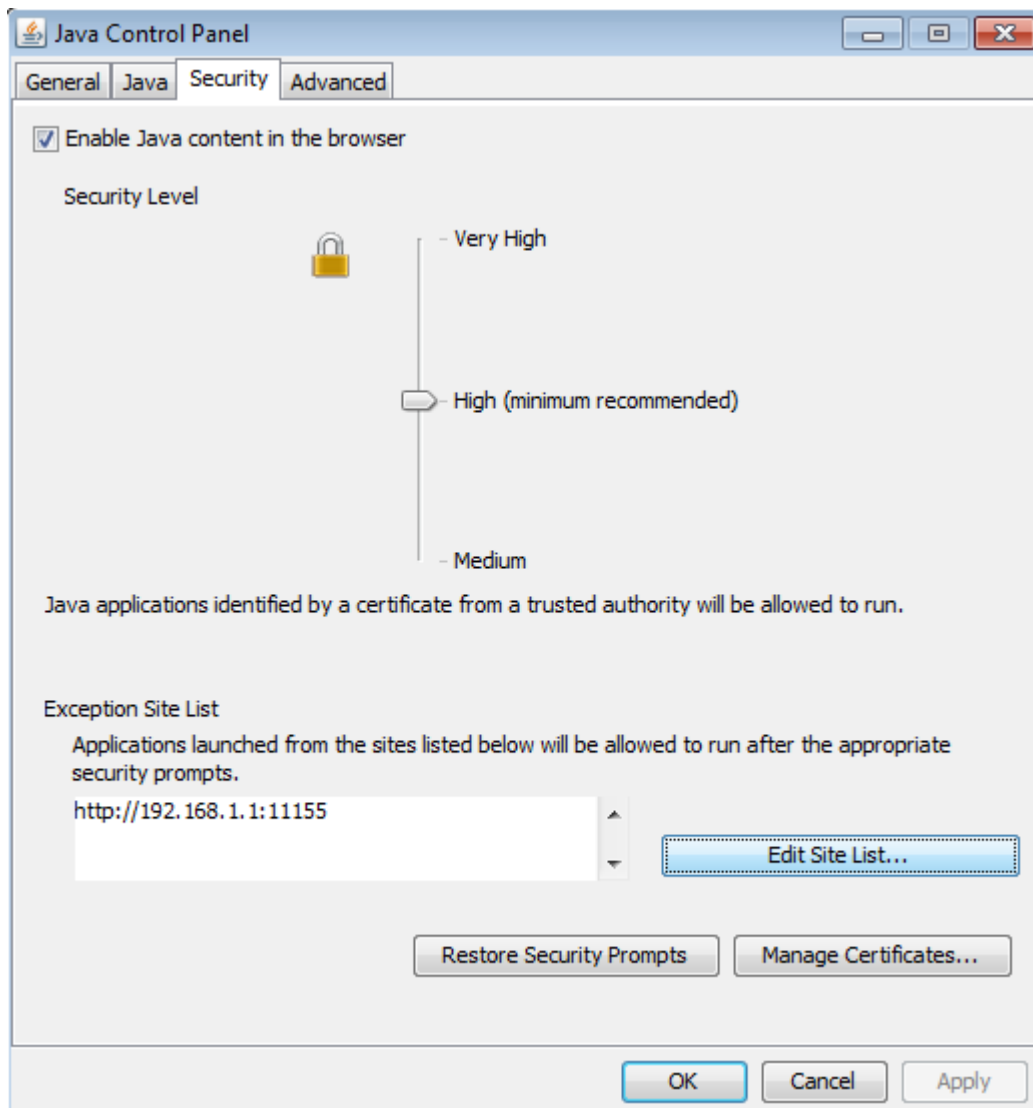
This document describes the Java recommended settings to avoid problems that may occur with the different java versions.

### Open the java settings



The Java settings are accessible from the Control Panel

### Security settings



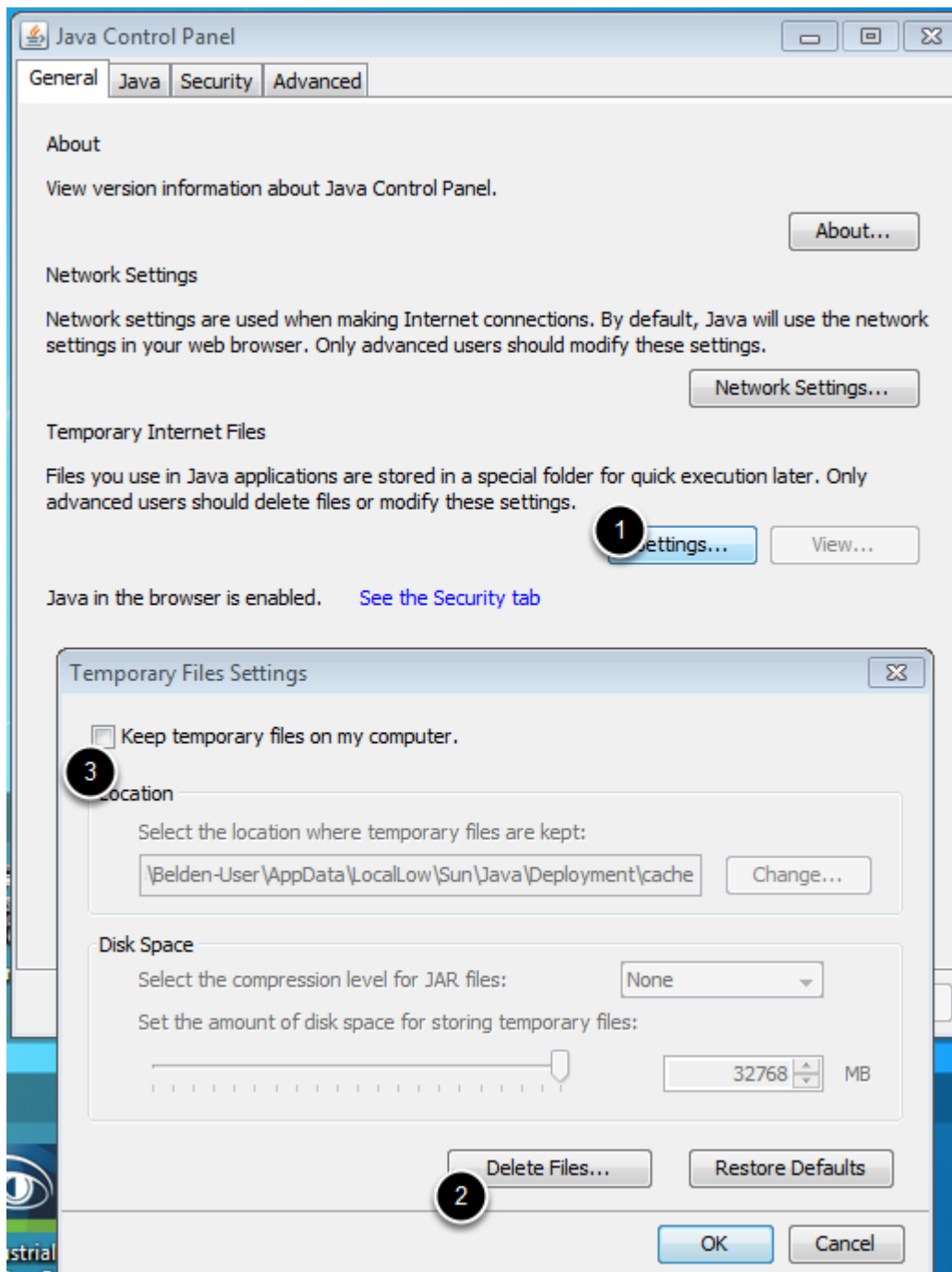
Add the URL of the server in the Exception site list.

Example in the screen shot :

server address : 192.168.1.1

Port : 11155 (default port for Hivision 5.1)

## General settings



From the "General " tab, select "Settings"

Delete Files ...

Unselect "Keep temporary files on my computer"